



# Player Responsible Gaming Report

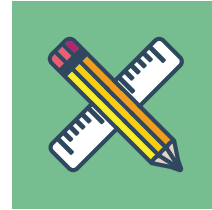
The New Jersey Lottery (“Lottery”) takes the well-being of its players very seriously. A positive play experience is broken into the following objectives:



EDUCATING PLAYERS



PROVIDING RESOURCES



PREVENTING UNDERAGE GAMBLING

## COMPONENTS OF RESPONSIBLE GAMING:



### EDUCATING PLAYERS:

- 1 Budget money spent on lottery as an entertainment expense. Money needed for daily expenses should not be used for playing the lottery.
- 2 Set a limit. Don't chase your losses.
- 3 Set some winnings aside for other purposes.
- 4 Winning and losing are all part of playing the Lottery and other gaming activities. If you are only prepared to win, you are not prepared to play the Lottery.
- 5 Playing the Lottery is a recreational activity and not an alternative to work.

### PREVENTING UNDERAGE GAMBLING:

#### Underage Play Prevention Tips

- 1 It's the law. Must be 18 or older to buy a Lottery ticket.
- 2 Don't involve underage children in your Lottery and other gambling activities.
- 3 Set a responsible play example for your child.
- 4 Parents are urged to think twice about gifting Lottery tickets to children, including anyone up to the age of 18.

### PROVIDING RESOURCES:

#### Responsible Gaming Partners



# SIGNS OF PROBLEM GAMBLING IN TEENS:



- Bragging about winnings
- Overly invested in performance of certain athletes and/or teams (fantasy sports)
- Overly interested in how various teams at school are performing
- Selling personal belongings to get money to gamble

- Showing off money, clothing, and other possessions
- Asking/taking/stealing money from family, friends and strangers
- Unexplained absences from school/dropping grades
- Increased family conflict

# CREATING A POSITIVE PLAY ENVIRONMENT:



<b>Personal Responsibility</b>	<ul style="list-style-type: none"> <li>• Take ownership of your gambling behavior.</li> <li>• Be aware of how much money you spend on Lottery.</li> <li>• Only play with money you can afford to lose.</li> <li>• Play Lottery with money that is in your entertainment budget.</li> <li>• Monitor your Lottery play for behavioral changes.</li> </ul>
<b>Honesty &amp; Control</b>	<ul style="list-style-type: none"> <li>• Understand the nature of gambling. Lottery is not a good way to make money.</li> <li>• Understand how to play Lottery games.</li> <li>• Understand game odds.</li> </ul>
<b>Preparation</b>	<ul style="list-style-type: none"> <li>• Budget money specifically for Lottery play.</li> <li>• Consider how much time you should spend playing Lottery.</li> </ul>
<b>Gambling Literacy</b>	<ul style="list-style-type: none"> <li>• Be honest about how much money you spend or lose while playing Lottery.</li> <li>• Be honest about how much time you spend playing Lottery.</li> <li>• Remain in control of your Lottery play.</li> </ul>

The Lottery provides resources and tips on how to play the Lottery responsibly when participating in a group pool, especially when Powerball and/or Mega Millions jackpots get to large sums, at [www.njlottery.com/poolrules](http://www.njlottery.com/poolrules).

The Lottery provides the following Jackpot Squad worksheets to organize and track all participants in a group pool at [www.njlottery.com/JackpotSquad](http://www.njlottery.com/JackpotSquad):

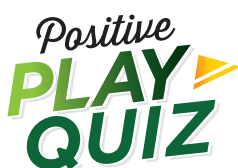
- Jackpot Squad - Powerball
- Jackpot Squad - Mega Millions

The Lottery and CCGNJ created a video series, "Having Crucial Conversations".

The following videos provide insights on how to talk to family, friends, and yourself about gambling:

- Preparing to Have a Crucial Conversation
- Crucial Conversation: Significant Other
- Crucial Conversation: Teen
- Crucial Conversation: Self

International Center for Responsible Gaming's Talking to Children about Gambling.



Must be 18 or older to buy a lottery ticket. Please play responsibly. If you or someone you know has a gambling problem, call 1-800-GAMBLER®.